

PHOTO DOSSIER of Career Highlights



Kirtley Leigh is founder and Artistic Director of *Paradise Concerts International Chamber Music Series*. She performs as solo violinist in the series and has performed concerts throughout Australia and especially in Queensland with her many internationally recognized artist musician colleagues and friends as they visit Australia. The Series was created by her in 2003 to highlight her love of chamber music performance after her move to Australia from London.



In addition to her career as a violin soloist and chamber musician, she has a thriving Private Music Studio in Smithfield , Queensland, where she has nurtured string talent for the past 12 years.



Leader of the *Paradise Chamber Orchestra* in a performance of Vivaldi's *Four Seasons* as directed by her from the leader chair. Leigh is as equally comfortable addressing the audience as she is at performing.



PARADISE CONCERTS INTERNATIONAL CHAMBER MUSIC and
CAIRNS CONCERT ORCHESTRA present

FOUR SEASONS

Vivaldi's timeless masterpiece

4pm Sunday 4 September 2011
Tickets ph 1300 855 885 \$35/\$20
Centre of Contemporary Arts
96 Abbott St, Cairns

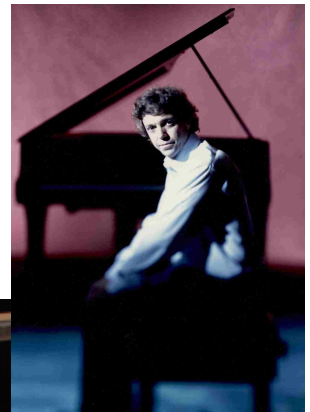
Featuring
Gym Roberts cello
Jo Anne Kemp harpsichord
Kirtley Leigh Paine violin

ticketlink.com.au paradiseconcerts.com

centre of contemporary arts
ticketLINK
CAIRNS CONCERT ORCHESTRA



Kirtley Leigh performs in a Duo with *Musica Viva* touring artist, concert pianist Benjamin Martin.



Star concert pianist Melvyn Tan performed with Kirtley Leigh for the opening Gala of her Series, and another piano luminary, Pascal Roge, is a regular in her series, together with his wife, pianist Ami Hakuno Roge. Pascal and Kirtley have performed in recital in many concerts together since their meeting in 2006.



In a performance of Piazzolla's *Four Seasons* coupled with Vivaldi's *Four Seasons* and the Cesar Frank *Sonata*, performed with Internationally lauded concert pianist Pascal Roge (see reference attached), and Kirtley's *Paradise Chamber Orchestra*.

Cairns Civic Theatre in association with
Paradise Concerts and Cairns Concert Orchestra
PROUDLY PRESENTS

THE CARNIVAL OF THE *Animals*


a CLASSICAL MUSIC EXTRAVAGANZA

PASCAL ROGÉ, piano, AMI ROGÉ, piano & harpsichord,
JANE RUTTER, flute, LILLIAN CROMBIE, actress,
KIRTLEY LEIGH PAINE, artistic director & violin

with
THE CAIRNS CONCERT ORCHESTRA
featuring the music of
Bach, Poulenc, Fauré, Ibert and Saint-Saens

SUNDAY 29 AUGUST - 5.00PM

ADULT: \$29 CONCESSION: \$25 CHILD: \$15 Additional charges may apply
BOOK AT ticketLINK: 1300 855 835 WWW. [ticketlink.COM.AU](http://ticketlink.com.au)



Cairns Regional Council





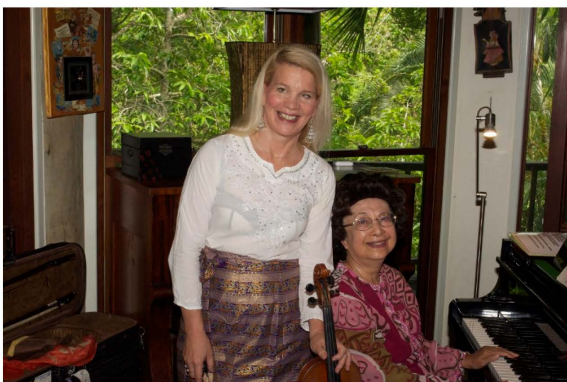
Kirtley was invited to travel to Cardiff, Wales in 2015 as Guest Leader (Concertmaster) of the *BBC Welsh Sinfonia* by conductor and good friend, Mark Eager. She also held Masterclasses for the orchestra strings during her visit.

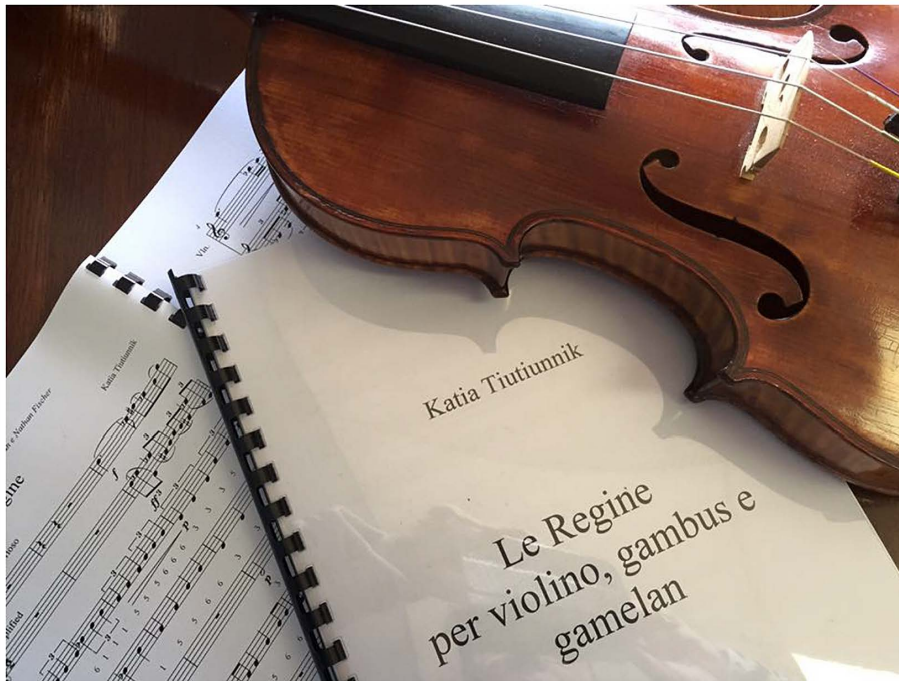
Kirtley performed a World Premiere for Violin and Digeridoo, *The Four Elements*, jointly composed by her and legendary digeridoo artist, William Barton, for the opening show of the *Cairns Indigenous Art Fair*, directed by Michael Snelling (see reference attached), and attended by Dignitaries such as the Premier of Australia and the Governor General.





.In 2014, Kirtley had the honor of being asked to give a Command Performance recital at the personal invitation of the Tun Mahatir Mohamad, the former Prime Minister of Malaysia. She also instructed his wife, Madame Siti Hasmah, in violin during the visit.





Katia Tiutiunnik

Le Regine
per violino, gambus e
gamelan

Dedicato a Kirtley Leigh, Shahamun Mohd Shah e Nathan Fischer

Le Regine

Katia Tiutiunnik

$\text{♩} = 42$
Maestoso e Misterioso

Violin

Amplified Gambus

Saron Panerus

Saron Barung

Saron Demung

Slentem

Gambang

Bonang

Kenong

Ghendang

Ghendang

Gong

Gong Aggung

As a result of the personal recital for the Prime Minister of Malaysia, a performance for the Australasian Premiere of composer Katia Tiutiunnik's Violin Concerto, *Noor*, has been planned.

Katia also subsequently composed the new work, *Le Regine*, for her and two traditional Malaysian instrumental soloists. The World Premiere of this work will be given during this tour.

Move over Melbourne, Cairns has 8 seasons in a day!

MUSIC REVIEW
THE EIGHT SEASONS

debut of the new Paradise Chamber Orchestra
with international pianist Pascal Rogé
one night only at Cairns Civic Theatre
September 2007

review by Jan Lahney

Tropical seasons are lacking the sensuous reds of a real autumn and the white frigidity of a real winter but Cairns audiences recently thrilled at the chance to experience eight musical seasons in one night at the Cairns Civic Theatre.

Top violinist Kirtley Leigh Paine says her Paradise Chamber Orchestra's professional debut with a program called *Eight Seasons*, headlined by international pianist Pascal Rogé, was a chance for talented local musicians to give back to the community. She described the chamber orchestra's professional status as "the next step for classical music in the region".

Astor Piazzolla (1921 -1992) and Antonio Vivaldi (1675 - 1741) each contributed his own version of the *Four Seasons*, supported by pertinent poetry readings by Kier Shorey.

"... as in a fairytale magic does wonders". Thus spoke Kier Shorey. The narrator, in bohemian vest, complete with cigar and wine glass, painted pastoral delights using specially commissioned poetry

by Argentinean poet Maria Griselda Cuerva to accompany the tango rhythms of Piazzolla's *Four Seasons*.

The Paradise Chamber Orchestra allowed Cairns to enjoy the subtlety of Pascal Rogé's piano work. The pianist explored a *lightness of being*, exposing the bubbles of tenderness of a Piazzolla summer as he enticed Kirtley Leigh Paine's fine violin to flirt with him. By Autumn, "when the poets recite and the wind laughs out loud", the Rogé piano metaphorically lifted its skirts and picked its way delicately between the rich tonal colour of the leaves.

Louise King's cello caused the Cairns collective soul to really move. Her totally entrancing control of the fun, flirting and fighting tension of Piazzolla's tango alternatively smiled, seduced and punched its way through the first cycle accentuated by her angular body movement, reminiscent of the tango dancer's fire.

The Argentinean Piazzolla's four distinct works, not meant to in any way salute Vivaldi's *Four Seasons*, nor even be played as a suite, made a real connection with the Cairns audience. A child, unable to hold back, broke into the music with spontaneous applause.

By the time the local chamber orchestra joined the three internationally-saluted musicians, Rogé, Paine and King, for the more easily recognised *Four Seasons* by Vivaldi, the audience's stillness and focus spoke volumes.

30 ARTS NEXUS ~ EDITION 64
October - December 2007
www.artsnexus.com.au

Rogé's piano was replaced by a harpsichord commanded by the celebrated harpsichordist, Ami Hakuno. The ting-tang of her instrument dragged the audience focus away from Piazzolla's streets of Buenos Aires.

Back centuries, and Antonio Vivaldi supported by narration of his own sonnets sprang into spring, "tossing flowers". Kirtley Leigh Paine's violin dominated with the favourite string flavour of the Vivaldi work.

Paradise Chamber Orchestra violinist Amber Stewart (Canoplia), juggling recent motherhood and rehearsals, says it was quite an honour to be able to play the whole Vivaldi *Four Seasons*, especially in the company of such international musicians.

Celebrated teacher Nadia Boulanger once told Astor Piazzolla to honour his own musical soul and never copy anyone else. While teaching the now famous Pascal Rogé in Paris where the musician's legend has it the tango was born, Boulanger used Piazzolla's success to inspire Pascal Rogé.

Cairns musicians and audiences have enjoyed both talents thanks to the professional debut of the Paradise Chamber Orchestra's one night season.

The musical message resonates: if you honour your own soul's voice, your music, too, will sing. Jan Lahney

The Piazzolla Four Seasons Piano Trio L-R cellist Louise King, pianist Pascal Rogé and violinist Kirtley Leigh Paine

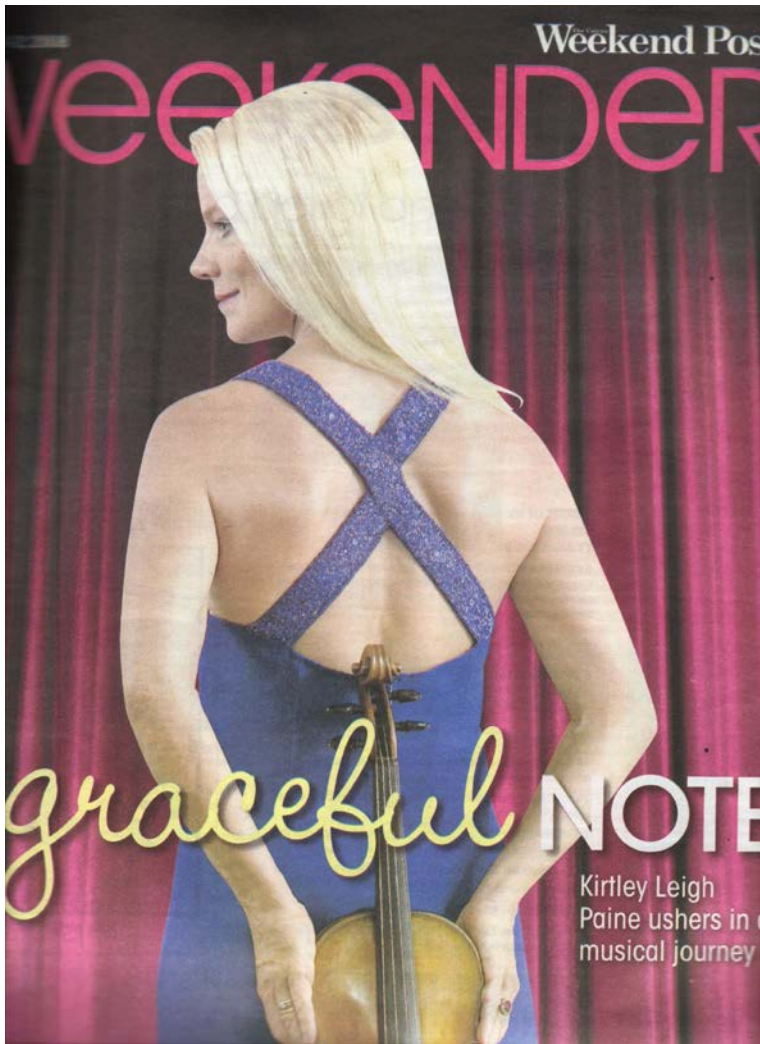


ARTS NEXUS ~ EDITION 64
October - December 2007
www.artsnexus.com.au

Kirtley performs regularly with International Concert Pianist Pascal Rogé- here is a review of a concert Kirtley created- *The Eight Seasons*- featuring the *Four Seasons* of both Vivaldi and Piazzolla juxtaposed. They were joined by cello soloist Louise King.



Kirtley Leigh was Principal Second Violin of the *Stavanger Symphony Orchestra*, Norway, from 1987-1990. She also soloed with the Orchestra and made regular recordings for Norwegian Radio during her time with the Stavanger Symphoniker.



Kirtley's creation of the *Paradise Concerts International Chamber Music Series* was greeted with excitement in the Press throughout Queensland.



Transport yourself to the magic of classical music - here in Paradise

www.paradiseconcerts.com

In 2007, Kirtley was appointed Guest Leader of the *Barrier Reef Orchestra*, Townsville, Queensland, and appeared as both soloist and concertmaster in varied performances under the baton of world famous conductor, Sir John Hopkins, OBE.

Conductor: Professor John Hopkins OBE

For the first concert of 2007 the Barrier Reef Orchestra will be working under the baton of Professor John Hopkins OBE. Over the last fifty years he has conducted major orchestras in England, New Zealand and Australia, held the post of Director of Music for the ABC, and been Artistic Adviser and Education Consultant to the Sydney Symphony Orchestra. He was the founding Dean of the Victorian College of the Arts School of Music and Director of the Sydney Conservatorium of Music in addition to working as a conductor with many youth and professional orchestras worldwide. He studied conducting at the Guildhall School of Music, the Mozarteum in Salzburg and has taught conducting at the VCA, Sydney Conservatorium of Music and the University of Melbourne. He is currently teaching conducting to Masters and Undergraduate students at the University of Melbourne. John is the patron of the Barrier Reef Orchestra.



Seraphim Trio

The Seraphim Trio was formed in 1995 and quickly developed a reputation as one of Australia's most intelligent and dynamic chamber groups. The trio received the prize for Leading Piano Trio and the Audience Choice Award in the 2001 Australian National Chamber Music Competition, and has performed extensively around Australia, and internationally. The trio can be heard regularly on ABC-Classical-FM. Coached by Hatto Beyrele in Hannover, the Seraphim Trio has performed in Italy, Japan, at the Schönberg Festival in Vienna, and in Noumea for Musica Viva Export. In Australia, the group appears regularly for Musica Viva, in its Menage, Countrywide and Coffee Concerts series. The trio is a frequent guest at Australian music festivals, including those at Port Fairy, Castlemaine, Townsville, Mildura, the Barossa, and the Landmarks Festival in Melbourne.

The Trio has also performed its own series at the Art Gallery of South Australia, and at Iwaki Auditorium in Melbourne. The Seraphim Trio is committed to working with Australian composers, and has debuted several new works for piano trio.

'The Seraphim Trio was on top form and brought those priceless assets of complete clarity and absolute assurance in interpretation to the two major works in their program... Indeed, it comes as a surprise that such comparatively youthful players can have been playing together for 10 years, but it certainly shows in the keen empathy and rapport permeating everything they do.'

Rodney Smith, The Advertiser, February 2005



Concertmaster: Kirtley Leigh Payne

American violinist Leigh has a career that has taken her literally across the globe, performing in chamber concerts, recitals, and orchestras worldwide. A student of the legendary virtuoso Josef Gingold, she holds a B Mus (hons) degree from Indiana University and she was honoured with the prestigious American Federation of Music Prize in New York. In the '80s she was a member of the Hong Kong Philharmonic Orchestra, and on the faculty of the Hong Kong Academy for Performing Arts. In Europe she played in various orchestras, created and led her own chamber music series, performed as a soloist and recorded for Norwegian radio. Leigh has also played in England's finest chamber and symphony orchestras and has toured Europe extensively. Now based in Australia, Leigh was one of the Australian Festival of Chamber Music's performers in 2005. She gave her Australian recital debut in 2004, and in 2005 founded Paradise Concerts, a successful chamber music series in Cairns, Queensland. The Queensland Arts Council appointed Leigh as a touring artist for both '05 and '06.



CONTEMPORARY classic

Three wonderful nights of classical and chamber music at Centre of Contemporary Arts will begin next week.

Paradise Concerts International Chamber Music Series is returning in 2012, kicking off a three-concert partnership with Centre of Contemporary Arts on Tuesday night as part of Cairns Festival.

The first concert, *Obsession* trio of piano, accordion and violin, brings the mood of a 1940's Buenos Aires' barrios and the dark, seductive passionate nights of South America as heard in the music of Astor Piazzolla, Villa Lobos, Granados and more.

Performances come from Ambre Hammond, Chris Burcin, and Kirtley Leigh (pictured).

The second concert, *Fantasia*, features the classical masterpieces of Beethoven, Brahms, Schubert, Kreisler, Chopin, Liszt, Rachmaninov, Sarasate, Cole Porter, George Gershwin and Ravel, again featuring Ambre Hammond and Kirtley Leigh.

The final concert, *Comrade C*, is an international cabaret quartet from New Zealand comprising the eclectic mix of saxophone, cello, drums and accordion.

Their presentation of the Comrade Z Radio Hour is a flamboyant and totally irreverent cabaret of wild gypsy music including a guest appearance by Kirtley Leigh as gypsy tiddler and mistress of ceremonies.

Paradise Concerts International Chamber Music Series features three shows next week from 7.30pm nightly. Tickets are on sale now at artscairns.com.au or 4050 9400. More information is at paradiseconcerts.com

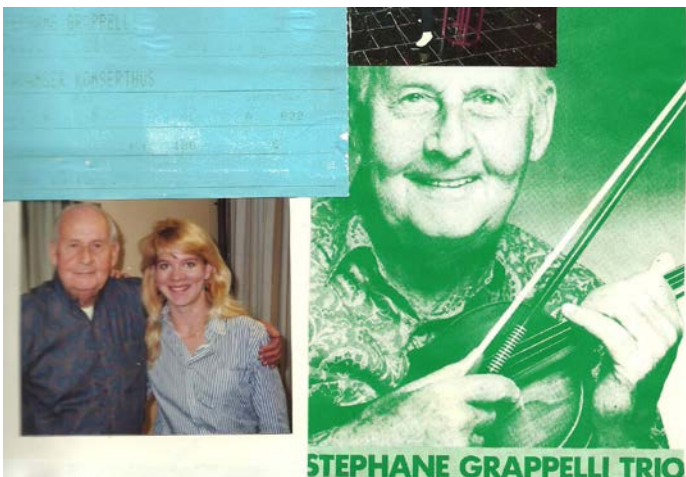




Kirtley Leigh was a student of Josef Gingold at *Indiana University* from 1978-1983. Here she is pictured together with Gingold and Henryk Szering following a masterclass she performed in for Szering.



Leigh shared musical insights with Itzhak Perlman in 1979 in Atlanta. She even got to play Itzhak's precious Stradivarius, and carried those musical moments with her to this day!



Kirtley had the good fortune to have a series of private lessons (and lunch) with jazz violin legend Stephane Grappelli during his visit to Norway in 1990.



Paradise Concerts IN PARTNERSHIP WITH centre of contemporary arts | cairns
 www.paradiseconcerts.com PRESENTS

10TH ANNIVERSARY SERIES
 10th
 IMMERSE YOURSELF
 IN CLASSICAL MUSIC
 2013

MÉNAGE À TROIS

Piano Trio

f *♩*

A four-concert series of
CHAMBER MUSIC MASTERPIECES

CONCERT 1 20 APRIL	CONCERT 2 6 JULY	CONCERT 3 31 AUGUST	CONCERT 4 23 NOVEMBER
-----------------------	---------------------	------------------------	--------------------------

7:30PM
 CABARET SINGLE TICKET \$39 CABARET TABLE (4 PEOPLE) \$145
 (CABARET SEATING IS LOCATED CLOSEST TO THE STAGE AT TABLES SERVICED BY WAIT STAFF)
 GENERAL ADMISSION \$29 / CONCESSION \$24



In 2010, Kirtley formed a Trio, *The Serendipity Trio*, together with cellist Gwyn Roberts and pianist Jenni Flemming-Roberts. Gwyn and Jenni maintain active solo and teaching careers, both based as Professors at the *Queensland Conservatorium of Music*.

le.

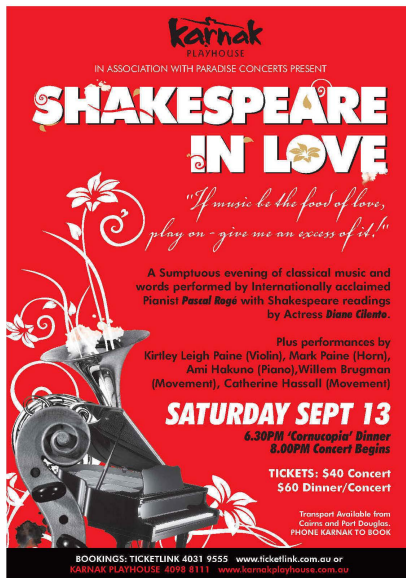


ounznews - 9 - October 2006

In 2006 Kirtley was invited to tour New Zealand, performing Recitals with pianist Nan Gibson Brine, and giving Masterclasses throughout the North and South Islands. Her tour culminated in giving the *World Premiere* of a *Violin Concerto* written specially for her, *Whataku*, by Ross Carey.

The performance took place in Nelson, with the *Nelson Symphony Orchestra*, and her interpretation of this new work was heralded in the press.





Kirtley created a concert to feature Hollywood Actress Diane Cilento. Diane was the wife of Sean Connery, and known for her Femme fatale roles in the screen goddess era of the 50s. Kirtley and Diane featured together in the program *Shakespeare in Love*, which highlighted Diane in chamber music works for narrator. The two ladies became fast friends.

Parade Concerts IN PARTNERSHIP WITH centre of contemporary arts | cairns PRESENTS

Torchlight Tango

Featuring 5-piece Orquesta Tipica

Sultry Guest Stars
 Eliens and Gianni from Tango Craze
 Chris Burin: Accordion
 Joy Power-Cleary: Soprano (singing the Torch Songs of Edith Piaf)

SATURDAY 23RD NOVEMBER, 7:30PM
 CABARET SINGLE TICKET \$39 | CABARET TABLE (4 PEOPLE) \$145
(CABARET SEATING IS LOCATED CLOSEST TO THE STAGE AT TABLES SERVICED BY WAIT STAFF)
 GENERAL ADMISSION \$32

PROUDLY SPONSORED BY: Budget, CARDVILLA, GILLIGAN SPINCE DESIGN, Spirit 21, Ivy

centre of contemporary arts | Centre of Contemporary Arts
www.artecairns.com.au | Ticket Line: 4050 9400
 96 Abbott Street, Box office open Mon to Fri, 10am to 5pm



Kirtley also loves tango music, and has her own 6 piece tango group, *Tango Amor*.

Parade Concerts IN PARTNERSHIP WITH centre of contemporary arts | cairns PRESENTS

All That Jazz

with HERB ARMSTRONG
 Grandson of the Legend
 featuring THE ROYAL ST KREW

DIRECT FROM BOURBON STREET TO YOU!!!

SATURDAY 14TH SEPTEMBER, 7:30PM
 CABARET SINGLE TICKET \$39 | CABARET TABLE (4 PEOPLE) \$145
(CABARET SEATING IS LOCATED CLOSEST TO THE STAGE AT TABLES SERVICED BY WAIT STAFF)
 GENERAL ADMISSION \$32

PROUDLY SPONSORED BY: Budget, CARDVILLA, GILLIGAN SPINCE DESIGN, Spirit 21, Ivy

centre of contemporary arts | Centre of Contemporary Arts
www.artecairns.com.au | Ticket Line: 4050 9400
 96 Abbott Street, Box office open Mon to Fri, 10am to 5pm

Kirtley Leigh was approached by Louis Armstrong's grandson, Herb Armstrong, to create a show featuring Herb together with Kirtley showing off her improvisational skills as a featured soloist with his jazz band.





Kirtley and flute sensation Jane Rutter have featured in several concerts together, including Bach's *Brandenburg 4th Concerto* with harpsichord soloist Ami Hakuno Roge. Leigh directed the chamber orchestra from the leader's position.



A few of the many classical giants Leigh has performed with include Conductor and grandson of the great composer, Maxim Shostakovich, pictured in Hong Kong in the dressing room after a performance of Shostakovich's *5th Symphony* in which Leigh, as acting leader, played the first violin solos, and Soprano Dame Kiri Te Kanawa, pictured here backstage in Lille, France, during her tour. Leigh played Principal Second Violin on Dame Kiri's European tour, and since they were in such close proximity on stage every night, Kiri invited Leigh to dinner on the final night.



In Beijing with Conductor Kenneth Schermerhorn and Concert pianist Li Jian after the HK Philharmonic's Beijing Premiere



In 2014 performing at the *Tanks Arts Centre* to a sold-out full house for the great singer Nicki Doll. Kirtley performed a fiery cadenza she composed herself, and which she performed arriving on stage as a prelude to the finale.



Sharing an intimate moment on stage following their passionate Amy Beach *Sonata* debut, Kirtley with Australian pianist Amber Hammond.



Kirtley's *Paradise Concerts Chamber Music Series* began a Residency at the Centre of Contemporary Arts in 2012. Here she's relaxed after a great opening night in performance for *Fantasia*, an evening of French Violin music.



Kirtley with New York City Opera Mezzo-Soprano Alteouise De Vaughn after a Gala performance in December, 2015. Kirtley performed on the viola for that weekend of 3 performances in 3 cities, collaborating with Alteouise in the majestic Brahms 2 *Gesänge, Op.91 Gestillte Sehnsucht* and *Geistliches Wiegenlied*

A promotional poster for a Christmas concert. The title is 'We 3 Divas A CLASSICAL CHRISTMAS'. Below the title, it says 'STARRING ALTEOUISE DE VAUGHN, KIRTLEY LEIGH & SUNA FLYNN'. The poster features three photographs of the performers: Alteouise De Vaughn, Kirtley Leigh, and Suna Flynn. The background is black with white text and small Christmas tree icons in the corners. At the bottom, it provides the venue 'CLINK THEATRE, 18 MOWBRAY STREET PORT DOUGLAS', the website 'WWW.CLINKTHEATRE.COM.AU', the phone number '07 4015 3216', and the date 'FRIDAY 18TH DECEMBER 7:30PM BAR OPENS 6:30'. The logo 'the[Cl]ink' is also present.



Kirtley lets her hair down on New Year's Eve 2014 at the jazz club known across Australia-*Bernie's*. Here she jams with Tommy See Poy on sax and Bernie himself on acoustic bass.



She's even tried her hands at the Electric Violin for a few concerts during her long career



Leader and Artistic Director of the *Paradise Chamber Orchestra*



On the Television as producer and soloist for Herb Armstrong's visit to Cairns.



Kirtley shares a quiet moment in the Mendelssohn *d minor concerto* with the *Cairns Concert Orchestra*



Kirtley Leigh is at home in front of the camera whether cameras are rolling for interviews or leading her Chamber Music Series

Memorial and attached to the Aust... consequences of Aust... GALLERY REOPENS ON APRIL 26

TRIPLE TREAT OF UTOPIAN SOUNDS

PARADISE Concerts return to the Far North this weekend, starting off its 2013 series of classical music at Centre Of Contemporary Arts with *Menage a Trois* this Saturday. The first of four shows this year, this weekend sees Paradise Concerts artistic director and violin maestro Kirtley Leigh joined by international stars Gwyn Roberts on cello and Jenni Flemming on piano, for an intimate night of the finest classical sounds.

Kirtley's career has taken her across the globe as soloist, in chamber concerts, recitals, and orchestras worldwide.

A student of the legendary virtuoso Josef Gingold, she's performed with Hong Kong Philharmonic, Stavanger Symphony Orchestra, London Chamber Symphony, Midlands Philharmonic, Academy of London, Oxford and European Union Chamber Orchestras, among many others.

Exploring the gamut of styles and eras in an intimate trio setting, expect some of the best from Beethoven, Shostakovich, Rachmaninov, Haydn, Brahms, Mendelssohn, Schubert, Prokofiev and Dvorak.

Each concert will feature a choice of ticket - either front of the theatre in premium cabaret seating, catered by fully serviced wait staff - or in the more traditional theatre seats, which are cleverly tiered so the audience may enjoy full stage views.

CHECK PARADISE CONCERTS MENAGE A TROIS ON SATURDAY AT CENTRE OF CONTEMPORARY ARTS, 96 ABBOTT ST, CAIRNS, FROM 7.30PM. GENERAL ADMISSION TICKETS ARE \$24-\$29, CABARET TICKETS \$39 SINGLE, OR \$145 FOR TABLE OF FOUR. BOOK NOW AT ARTSCAIRNS.COM.AU

WE'RE FOR CAIRNS

The Cairns Post

Apr 18, 2013

www.cairns.com.au

She is passionate about every concert- and shares the joy of her love of the violin with her audiences and fellow chamber musicians alike.

Kirtley was invited to lead the chamber musicians for the memorial concert in honor of wildlife conservationist Steve Irwin's death. His father, Bob Irwin, narrated the chamber performance at *Australian Zoo*.





Paradise Concerts
International Classical Chamber Music
6TH ANNIVERSARY SERIES

THE FOUR DIVAS

IN CONCERT
Valentine's Gala

London International Piano Competition
Prize Winner
Andrea Romanova

Operatic Arias and Passionate Music

JOY POWER (Soprano), SOPRANO, KATERINA MANOLATOPOULOS (Mezzo),
ANNE HAWKINS (Piano), and HURLEY LEON PAINE (Violin)

Saturday, February 13th
Johnstone Shire Hall, Innisfail
7pm for 7:30pm Concert

Tickets: \$40.00 - \$22.00
Caterina's Concerts
\$40 Adults, \$20 Students,
\$10 Concessions/5th Family
Book Now! www.paradiseconcerts.com.au

Sponsors: Budget, X, and others.



